

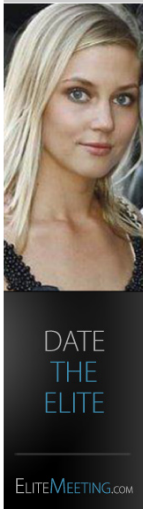


STATISTICS

Summary
Popular Pages
Entry Pages
Exit Pages
Came From
Keyword Analysis
Recent Keyword Activity
Recent Came From
Search Engine Wars
Exit Links
Exit Link Activity
Downloads
Download Activity
Visitor Paths
Visit Length
Returning Visits
Recent Pageload Activity
Recent Visitor Activity
Recent Visitor Map
Country/State/City/ISP
Browsers
System Stats
Lookup IP Address
Download Logs

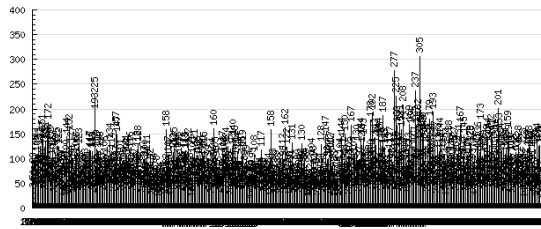
SEO SPONSORS

Top 10 Search Listing
48 Hour Google Listing
OUR SPONSORS
Web Design on Demand
Free Website Content
Get Targeted Visitors
Australia Domain Names
Web Hosting
1,000 Hits for \$12.99
Real Time Keyword Tool
Free Website & Hosting!
Domain Names
GameTimeZone
Earn Cash - Sharesale
20 Search Engines Free
Targeted Traffic

StatCounter Beta Design - What's New? [Read more about it](#) or [try it here](#).

Daily | Weekly | Monthly | Quarterly | Yearly

Page Loads Unique Visitors Returning Visitors

Select Date: ☐ Last 7 Days or ☐ 1 Jan 2010 - 31 Dec 2010Select Data: ☒ Show Page Loads ☒ Show Unique Visitors ☒ Show Returning VisitorsSelect Graph: ☒ Bar Graph ☐ Area Graph ☐ No Graph

If the graph becomes unreadable select the Area Graph option!

 ☐ Save As Default

	Page Loads	Unique Visitors	First Time Visitors	Returning Visitors
Total	38,576	22,730	9,641	13,089
Average	106	62	26	36

Day	Date	Page Loads	Unique Visitors	First Time Visitors	Returning Visitors
Friday	31st December 2010	46	29	14	15
Thursday	30th December 2010	131	67	30	37
Wednesday	29th December 2010	126	54	19	35
Tuesday	28th December 2010	125	57	24	33
Monday	27th December 2010	134	69	37	32
Sunday	26th December 2010	77	44	27	17
Saturday	25th December 2010	120	54	29	25
Friday	24th December 2010	91	25	23	25
Thursday	23rd December 2010	113	72	28	44
Wednesday	22nd December 2010	121	78	38	40
Tuesday	21st December 2010	128	65	28	37
Monday	20th December 2010	119	69	23	46
Sunday	19th December 2010	92	56	23	33
Saturday	18th December 2010	74	32	18	14
Friday	17th December 2010	123	80	32	48
Thursday	16th December 2010	92	60	27	33
Wednesday	15th December 2010	72	58	16	42
Tuesday	14th December 2010	128	82	31	51
Monday	13th December 2010	106	81	31	50
Sunday	12th December 2010	112	77	37	40
Saturday	11th December 2010	82	60	21	39
Friday	10th December 2010	77	50	26	24
Thursday	9th December 2010	109	66	31	35
Wednesday	8th December 2010	111	67	25	42
Tuesday	7th December 2010	129	70	27	43
Monday	6th December 2010	159	81	35	46
Sunday	5th December 2010	119	74	47	27
Saturday	4th December 2010	108	52	26	26
Friday	3rd December 2010	123	61	27	34
Thursday	2nd December 2010	116	68	33	35
Wednesday	1st December 2010	134	67	34	34
Tuesday	30th November 2010	153	75	29	46
Monday	29th November 2010	201	93	45	48
Sunday	28th November 2010	130	70	29	41
Saturday	27th November 2010	101	54	24	30
Friday	26th November 2010	122	72	38	34
Thursday	25th November 2010	141	72	30	42
Wednesday	24th November 2010	152	87	38	49
Tuesday	23rd November 2010	127	81	30	51
Monday	22nd November 2010	144	88	42	46
Sunday	21st November 2010	129	71	33	38
Saturday	20th November 2010	108	55	25	35
Friday	19th November 2010	120	74	38	36
Thursday	18th November 2010	105	65	24	41
Wednesday	17th November 2010	173	75	37	38
Tuesday	16th November 2010	112	69	28	41
Monday	15th November 2010	136	76	32	44
Sunday	14th November 2010	115	59	24	35
Saturday	13th November 2010	38	32	13	19
Friday	12th November 2010	107	53	16	37
Thursday	11th November 2010	93	59	26	33
Wednesday	10th November 2010	128	69	29	40
Tuesday	9th November 2010	128	79	39	39
Monday	8th November 2010	100	58	18	40
Sunday	7th November 2010	106	54	23	31
Saturday	6th November 2010	89	42	15	27
Friday	5th November 2010	145	67	32	35
Thursday	4th November 2010	105	65	28	37
Wednesday	3rd November 2010	94	73	34	29
Tuesday	2nd November 2010	167	73	30	43
Monday	1st November 2010	131	89	40	49
Sunday	31st October 2010	107	65	24	41
Saturday	30th October 2010	78	54	25	29
Friday	29th October 2010	127	64	25	39
Thursday	28th October 2010	106	74	32	32
Wednesday	27th October 2010	90	61	16	45
Tuesday	26th October 2010	110	72	29	43
Monday	25th October 2010	138	72	28	44
Sunday	24th October 2010	124	66	31	35
Saturday	23rd October 2010	68	37	20	17
Friday	22nd October 2010	92	63	32	31
Thursday	21st October 2010	106	58	24	34
Wednesday	20th October 2010	114	79	36	43
Tuesday	19th October 2010	144	80	29	51
Monday	18th October 2010	113	78	29	49
Sunday	17th October 2010	133	81	34	38
Saturday	16th October 2010	62	51	27	24
Friday	15th October 2010	137	78	30	48
Thursday	14th October 2010	193	77	40	37
Wednesday	13th October 2010	103	66	25	41
Tuesday	12th October 2010	134	101	60	41
Monday	11th October 2010	179	96	43	53
Sunday	10th October 2010	129	66	36	30
Saturday	9th October 2010	71	48	21	27
Friday	8th October 2010	124	62	28	34
Thursday	7th October 2010	149	90	42	48
Wednesday	6th October 2010	155	93	46	47
Tuesday	5th October 2010	157	91	50	41
Monday	4th October 2010	305	131	64	67
Sunday	3rd October 2010	182	92	52	40
Saturday	2nd October 2010	167	77	42	35
Friday	1st October 2010	237	94	49	45
Thursday	30th September 2010	110	71	24	34
Wednesday	29th September 2010	125	68	27	41
Tuesday	28th September 2010	164	82	36	46
Monday	27th September 2010	169	66	29	37
Sunday	26th September 2010	113	58	22	36
Saturday	25th September 2010	90	49	24	25
Friday	24th September 2010	104	57	23	34
Thursday	23rd September 2010	107	61	36	25
Wednesday	22nd September 2010	208	91	48	43
Tuesday	21st September 2010	158	79	43	36
Monday	20th September 2010	171	87	50	37

Monday	29th September 2010	177	74	42	27
Saturday	18th September 2010	168	70	41	29
Friday	17th September 2010	225	116	71	45
Thursday	16th September 2010	277	101	47	54
Wednesday	15th September 2010	93	60	26	34
Tuesday	14th September 2010	92	60	20	40
Monday	13th September 2010	127	69	31	38
Sunday	12th September 2010	113	71	34	37
Saturday	11th September 2010	79	43	14	29
Friday	10th September 2010	67	48	18	30
Thursday	9th September 2010	123	70	24	46
Wednesday	8th September 2010	187	94	40	54
Tuesday	7th September 2010	125	70	28	42
Monday	6th September 2010	135	69	29	40
Sunday	5th September 2010	144	83	35	48
Saturday	4th September 2010	76	47	18	29
Friday	3rd September 2010	126	66	21	45
Thursday	2nd September 2010	142	75	31	44
Wednesday	1st September 2010	104	66	26	40
Tuesday	31st August 2010	192	91	38	53
Monday	30th August 2010	178	100	44	56
Sunday	29th August 2010	99	69	28	41
Saturday	28th August 2010	73	50	18	32
Friday	27th August 2010	85	63	19	44
Thursday	26th August 2010	93	63	24	39
Wednesday	25th August 2010	143	67	24	43
Tuesday	24th August 2010	127	72	26	46
Monday	23rd August 2010	144	69	29	40
Sunday	22nd August 2010	92	69	24	38
Saturday	21st August 2010	69	40	14	26
Friday	20th August 2010	130	67	33	34
Thursday	19th August 2010	93	62	20	42
Wednesday	18th August 2010	107	74	32	42
Tuesday	17th August 2010	77	56	19	37
Monday	16th August 2010	167	89	37	52
Sunday	15th August 2010	105	52	21	31
Saturday	14th August 2010	68	41	19	22
Friday	13th August 2010	99	64	22	42
Thursday	12th August 2010	150	55	21	34
Wednesday	11th August 2010	92	62	24	38
Tuesday	10th August 2010	114	61	18	43
Monday	9th August 2010	144	77	33	44
Sunday	8th August 2010	104	49	17	32
Saturday	7th August 2010	57	31	13	18
Friday	6th August 2010	76	45	19	26
Thursday	5th August 2010	58	30	10	20
Wednesday	4th August 2010	88	38	22	16
Tuesday	3rd August 2010	93	47	21	26
Monday	2nd August 2010	112	50	24	26
Sunday	1st August 2010	117	62	30	32
Saturday	31st July 2010	100	36	14	22
Friday	30th July 2010	98	49	25	24
Thursday	29th July 2010	147	61	19	42
Wednesday	28th July 2010	64	35	7	28
Tuesday	27th July 2010	84	49	22	27
Monday	26th July 2010	128	56	22	34
Sunday	25th July 2010	84	49	15	34
Saturday	24th July 2010	66	39	10	29
Friday	23rd July 2010	34	30	10	20
Thursday	22nd July 2010	84	48	13	35
Wednesday	21st July 2010	82	53	22	31
Tuesday	20th July 2010	98	43	16	27
Monday	19th July 2010	104	52	23	29
Sunday	18th July 2010	62	42	14	28
Saturday	17th July 2010	38	32	16	16
Friday	16th July 2010	51	35	17	18
Thursday	15th July 2010	86	49	18	31
Wednesday	14th July 2010	94	45	22	23
Tuesday	13th July 2010	91	56	22	34
Monday	12th July 2010	130	75	46	29
Sunday	11th July 2010	92	51	20	31
Saturday	10th July 2010	80	36	13	23
Friday	9th July 2010	90	49	19	30
Thursday	8th July 2010	62	40	9	31
Wednesday	7th July 2010	63	44	21	23
Tuesday	6th July 2010	60	40	15	25
Monday	5th July 2010	131	67	29	38
Sunday	4th July 2010	91	45	16	29
Saturday	3rd July 2010	86	31	12	19
Friday	2nd July 2010	73	44	15	19
Thursday	1st July 2010	122	54	19	35
Wednesday	30th June 2010	162	49	21	28
Tuesday	29th June 2010	98	55	21	34
Monday	28th June 2010	112	67	20	47
Sunday	27th June 2010	73	43	15	28
Saturday	26th June 2010	64	38	15	23
Friday	25th June 2010	83	46	22	24
Thursday	24th June 2010	89	51	19	32
Wednesday	23rd June 2010	58	40	16	24
Tuesday	22nd June 2010	75	46	16	30
Monday	21st June 2010	93	60	31	29
Sunday	20th June 2010	158	53	13	40
Saturday	19th June 2010	66	39	21	18
Friday	18th June 2010	84	53	19	34
Thursday	17th June 2010	68	51	10	41
Wednesday	16th June 2010	70	55	24	31
Tuesday	15th June 2010	58	49	13	29
Monday	14th June 2010	73	49	22	27
Sunday	13th June 2010	117	74	15	59
Saturday	12th June 2010	74	64	35	29
Friday	11th June 2010	60	48	19	29
Thursday	10th June 2010	64	52	16	36
Wednesday	9th June 2010	71	55	15	40
Tuesday	8th June 2010	108	64	22	42
Monday	7th June 2010	95	66	33	33
Sunday	6th June 2010	69	39	6	33
Saturday	5th June 2010	38	26	14	12
Friday	4th June 2010	68	51	15	36
Thursday	3rd June 2010	59	42	11	31
Wednesday	2nd June 2010	99	55	18	37
Tuesday	1st June 2010	89	51	21	30
Monday	31st May 2010	119	67	22	45
Sunday	30th May 2010	106	61	16	45
Saturday	29th May 2010	64	44	14	30
Friday	28th May 2010	68	41	10	31
Thursday	27th May 2010	114	68	32	36
Wednesday	26th May 2010	102	67	24	43
Tuesday	25th May 2010	128	75	42	33
Monday	24th May 2010	140	56	16	40
Sunday	23rd May 2010	121	58	22	36
Saturday	22nd May 2010	63	40	20	20
Friday	21st May 2010	88	64	27	37
Thursday	20th May 2010	92	68	25	43
Wednesday	19th May 2010	124	88	37	51
Tuesday	18th May 2010	108	84	30	54
Monday	17th May 2010	106	65	13	52
Sunday	16th May 2010	117	67	29	38
Saturday	15th May 2010	54	43	14	29
Friday	14th May 2010	43	34	10	24
Thursday	13th May 2010	76	47	14	33
Wednesday	12th May 2010	98	60	28	32
Tuesday	11th May 2010	105	55	22	33
Monday	10th May 2010	160	85	29	56
Sunday	9th May 2010	104	66	27	39
Saturday	8th May 2010	70	38	14	24
Friday	7th May 2010	60	52	24	24
Thursday	6th May 2010	99	65	30	35
Wednesday	5th May 2010	77	58	16	42
Tuesday	4th May 2010	86	72	34	38
Monday	3rd May 2010	115	75	34	41
Sunday	2nd May 2010	111	65	19	46
Saturday	1st May 2010	100	65	27	38
Friday	30th April 2010	81	63	23	40
Thursday	29th April 2010	102	67	25	42
Wednesday	28th April 2010	106	73	27	46
Tuesday	27th April 2010	74	58	25	33
Monday	26th April 2010	121	77	31	46
Sunday	25th April 2010	105	71	45	26
Saturday	24th April 2010	57	33	17	16
Friday	23rd April 2010	83	54	20	34
Thursday	22nd April 2010	122	68	25	43
Wednesday	21st April 2010	78	48	19	29
Tuesday	20th April 2010	115	78	28	42
Monday	19th April 2010	113	88	41	47
Sunday	18th April 2010	85	59	18	41
Saturday	17th April 2010	83	47	20	27

Friday	16th April 2010	75	48	18	30
Thursday	15th April 2010	105	62	23	32
Wednesday	14th April 2010	116	69	38	31
Tuesday	13th April 2010	117	70	29	41
Monday	12th April 2010	125	71	32	39
Sunday	11th April 2010	112	55	17	38
Saturday	10th April 2010	42	29	10	19
Friday	9th April 2010	80	57	26	31
Thursday	8th April 2010	100	79	34	45
Wednesday	7th April 2010	107	64	26	38
Tuesday	6th April 2010	158	82	27	55
Monday	5th April 2010	66	42	20	22
Sunday	4th April 2010	65	46	20	26
Saturday	3rd April 2010	48	38	18	20
Friday	2nd April 2010	64	42	13	29
Thursday	1st April 2010	41	26	11	15
Wednesday	31st March 2010	58	46	21	25
Tuesday	30th March 2010	78	56	29	27
Monday	29th March 2010	58	36	10	28
Sunday	28th March 2010	84	53	25	28
Saturday	27th March 2010	41	34	14	20
Friday	26th March 2010	92	60	23	37
Thursday	25th March 2010	66	56	13	43
Wednesday	24th March 2010	90	56	29	27
Tuesday	23rd March 2010	111	60	18	42
Monday	22nd March 2010	100	61	21	40
Sunday	21st March 2010	97	62	24	38
Saturday	20th March 2010	45	40	16	24
Friday	19th March 2010	72	50	10	40
Thursday	18th March 2010	78	61	21	40
Wednesday	17th March 2010	128	86	33	49
Tuesday	16th March 2010	118	86	35	51
Monday	15th March 2010	64	52	19	33
Sunday	14th March 2010	90	62	22	40
Saturday	13th March 2010	60	46	17	29
Friday	12th March 2010	74	46	30	36
Thursday	11th March 2010	116	83	28	55
Wednesday	10th March 2010	106	62	25	37
Tuesday	9th March 2010	104	66	27	39
Monday	8th March 2010	111	68	22	46
Sunday	7th March 2010	95	48	13	35
Saturday	6th March 2010	80	53	21	32
Friday	5th March 2010	64	38	12	26
Thursday	4th March 2010	101	69	26	43
Wednesday	3rd March 2010	87	62	25	37
Tuesday	2nd March 2010	147	88	45	43
Monday	1st March 2010	157	97	39	58
Sunday	28th February 2010	83	64	24	40
Saturday	27th February 2010	74	50	23	27
Friday	26th February 2010	114	76	34	42
Thursday	25th February 2010	134	71	26	45
Wednesday	24th February 2010	70	58	19	39
Tuesday	23rd February 2010	89	61	23	38
Monday	22nd February 2010	80	66	18	48
Sunday	21st February 2010	106	74	24	50
Saturday	20th February 2010	71	47	19	28
Friday	19th February 2010	87	55	17	38
Thursday	18th February 2010	116	68	26	42
Wednesday	17th February 2010	84	56	22	34
Tuesday	16th February 2010	116	82	41	41
Monday	15th February 2010	119	80	31	49
Sunday	14th February 2010	225	193	159	34
Saturday	13th February 2010	73	51	27	24
Friday	12th February 2010	113	59	22	37
Thursday	11th February 2010	116	67	30	37
Wednesday	10th February 2010	117	76	29	47
Tuesday	9th February 2010	86	70	26	44
Monday	8th February 2010	85	61	30	31
Sunday	7th February 2010	93	60	17	43
Saturday	6th February 2010	59	42	15	27
Friday	5th February 2010	64	51	15	36
Thursday	4th February 2010	83	51	21	30
Wednesday	3rd February 2010	123	75	38	37
Tuesday	2nd February 2010	90	59	24	35
Monday	1st February 2010	116	73	36	37
Sunday	31st January 2010	106	70	38	32
Saturday	30th January 2010	80	50	26	24
Friday	29th January 2010	98	44	18	26
Thursday	28th January 2010	127	70	38	32
Wednesday	27th January 2010	152	79	48	31
Tuesday	26th January 2010	87	55	36	19
Monday	25th January 2010	144	81	62	19
Sunday	24th January 2010	100	64	48	16
Saturday	23rd January 2010	91	58	42	16
Friday	22nd January 2010	89	59	33	26
Thursday	21st January 2010	81	61	25	36
Wednesday	20th January 2010	67	52	20	32
Tuesday	19th January 2010	122	86	41	45
Monday	18th January 2010	125	75	26	49
Sunday	17th January 2010	109	75	27	48
Saturday	16th January 2010	70	43	18	25
Friday	15th January 2010	117	74	28	46
Thursday	14th January 2010	101	69	22	47
Wednesday	13th January 2010	130	77	32	45
Tuesday	12th January 2010	172	66	22	44
Monday	11th January 2010	132	76	23	53
Sunday	10th January 2010	133	78	42	36
Saturday	9th January 2010	123	64	34	30
Friday	8th January 2010	137	90	49	41
Thursday	7th January 2010	151	81	41	40
Wednesday	6th January 2010	123	82	34	48
Tuesday	5th January 2010	123	67	34	33
Monday	4th January 2010	109	62	22	40
Sunday	3rd January 2010	109	75	39	37
Saturday	2nd January 2010	80	58	23	35
Friday	1st January 2010	83	50	16	34



Returning Visitors - Based purely on a cookie, if this person is returning to your website for another visit an hour or more later

First Time Visitors - Based purely on a cookie, if this person has no cookie then this is considered their first time at your website.

Unique Visitor - Based purely on a cookie, this is the total of the returning visitors and first time visitors - all your visitors.

Page Load - The number of times your page has been visited.

What can the Summary Stats tell me?

There are two dimensions to the stats for a 'Standard StatCounter project'. There are the 'Summary Stats', and the 'Detailed Log Analysis'. The 'Summary Stats' provide a lifetime daily count of the totals of visitors to your website each day. And allows you to run reports since the day you started the project! After a few months of tracking, it is absolutely superb to look back and to see the daily, weekly and monthly trends of your visitors. Does your website have a weekday rush and a weekend slump? Did your traffic take a surge leading up to a holiday season? Is your website in general growing or stagnating? **It is a wonderful tool to quickly assess the current success of your website.**

How do the Summary Stats work?

The 'Summary Stats' determines whether a visitor has been to your website before by using a cookie. So if a user has cookies disabled we have no way of knowing if they are unique or not, and will by default be considered unique. However the majority of visitors have cookies enabled.

To make up for relying on cookies in the summary stats, the rest of the stats are based on your detailed log analysis of the last xxx number of pageloads. The uniqueness in this case is based on your visitors' IP addresses. This method works very well for the majority, but yet again there is an exception. AOL users, and visitors who use what is known as a 'dynamic web proxy' that changes each time they access a webpage. So if a single AOL user visits 7 webpages on your website it will likely come up as 7 different IP addresses!

Both cookies and IP addresses have their strengths and weaknesses for determining the uniqueness of a visitor. It is impossible to be 100% accurate the entire time, but with the Standard StatCounter Project you get the best of both worlds. Cookies for the 'Summary Stats' and IP addresses for the 'Detailed Log Analysis'!